

Flat Plate Collector for Solar Heat EURO L20/L40/L42



Wagner Solar



The **EURO solar collectors** are premium products for solar heating support and hot water in small and large plants. They are made in Germany.

STANDOUTS

- **High-quality manufacturing**
- **Long life**
- **Versatile use**
- **Safe Installation**

DETAILS

As a solar pioneer, we develop and manufacture high-quality solar panels for more than 40 years in Germany. All EURO collectors are certified according to the quality label for solar thermal products: Solar Keymark.

The sturdy aluminum frame, a laser-welded copper and aluminum made absorber, solar safety glass as well as the quality EPDM glass sealing ensure a long product lifetime.

The EURO-collectors can be installed as local circumstances demand: In horizontal or vertical orientation, as on-roof, in-roof, façade or freestanding solution.

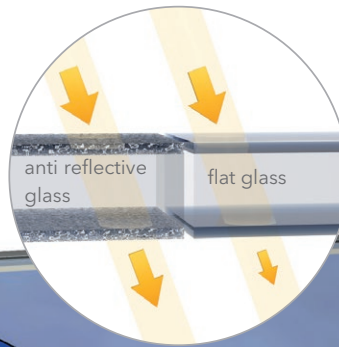
With the TÜV-certified mounting system TRIC the EURO-collectors are particularly easy to install and securely fastened on the roof.

Flat Plate Collector for solar heat EURO L20/L40/L42

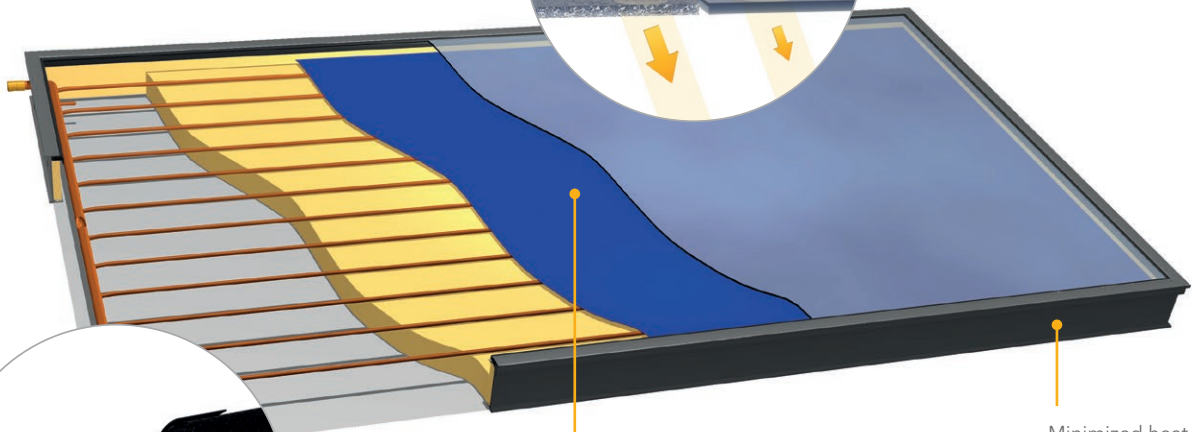


Perfection in Detail

We are perfecting and fine-tuning the individual components and their interaction. That's the secret of peak performance!



The special nanostructure of the anti reflective glass significantly reduces reflection, reaping up to 10% of additional solar yield! (only EURO L20 AR)



Minimized heat loss thanks to all-around edge and back wall insulation.

Maximized heat yield through laser-welded single surface absorber with selective vacuum coating.



Tool-less push-fit connection reduces installation time for connection tubes by 90%. Three EPDM gaskets give optimum safety.



LOW CO₂ - environmentally friendly aluminum

Our collectors now are even more climate friendly! For our collector frames, we exclusively use certified aluminum manufactured with low CO₂ emissions in European aluminum factories.



Certified TRIC racking systems - fast, safe and flexible

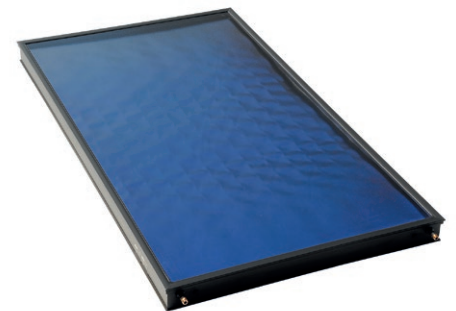


The collector types

We have the right collector in our program to match your wishes and local conditions.

The Powerful - EURO L20 AR

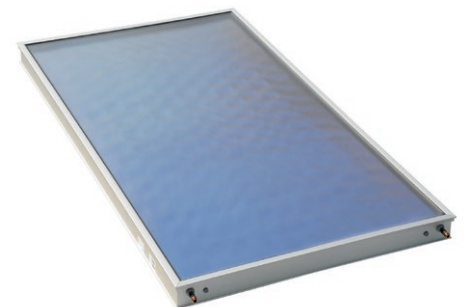
- 2,61 m² gross collector area
- Highly transparent anti reflective glass
- Black anodized aluminum frame with seamless side and 60 mm backside insulation
- 1.289 kWh/a annual collector yield (Solar Keymark, Würzburg, $T_m = 50\text{ °C}$)



AVIS
TECHNIQUE
EURO L20AR
n° 14.4/15-2087_V2,
publié le 17.09.2025

The Economical - EURO L40/42 HTF

- 2,61/2,25 m² gross collector area
- Solar safety glass
- Aluminum frame with seamless side and 30 mm backside insulation
- 1.016/871 kWh/a annual collector yield (Solar Keymark, Würzburg, $T_m = 50\text{ °C}$)





From collector to solar system

The EURO-collectors are the heart of our solar installations. Cover up to 30 % of your space heating needs with solar heating support or 2/3 of your domestic hot water requirements with solar water heating!



COMBI line - Award winning solar space heating and hot water system for one and two family homes. The efficient system saves up to 30 % gas and oil and can also be combined with a wood pellet heating boiler. It enables high output at constant temperature.



TOP line - The multiple award winning solar hot water system for one and two family homes. As the ideal solution for water heating at an extremely fair price, the TOP line system works with generous collector surfaces and strongly insulated components - and at a very fair price.

Technical data	EURO L20 AR	EURO L40 HTF	EURO L42 HTF
Collector area	gross 2,61 m ² ; aperture 2,36 m ²	gross 2,61 m ² ; aperture 2,36 m ²	gross 2,25 m ² ; aperture 2,01 m ²
Dimensions (L×W×H)	2151 x 1215 x 110 mm	2151 x 1215 x 80 mm	1933 x 1163 x 80 mm
Glazing	3,2 mm anti reflective glass, $\tau = 93,7\%$	3,2 mm solar safety glass, $\tau = 91\%$	
Absorber	Laser-welded single surface absorber with highly selective vacuum coating; $\alpha = 95\%$; $\varepsilon = 5\%$		
Encasing	Aluminum with seamless side and 60 mm backside insulation	Alu. with seamless side and 30 mm backside insulation	
Color	black anodized	aluminium	
Annual collector yield (Solar Keymark, Würzburg, $T_m = 50\text{ }^\circ\text{C}$)	1.289 kWh/a	1.016 kWh/a	871 kWh/a
Installation	Roof parallel (on-roof), roof integrated or free standing, vertically or horizontally		
Weight	48 kg	42 kg	33 kg