

# RATIOfresh 200

Freshwater unit with integrated solar controller



Wagner & Co

## Features at a Glance

### Hot water on demand

You want hot running water? The RATIOfresh will provide it for you. Always as much as you need and when you require it. Drinking water is heated using the continuous flow method without unnecessary storage.

### Dual purpose feature

FRESHcontrol - The controller of the freshwater unit does not just guarantee an efficient and safe supply of hot water. It also is the ideal control center for the entire solar system. The resulting clear arrangement and cost reduction are real benefits for you.

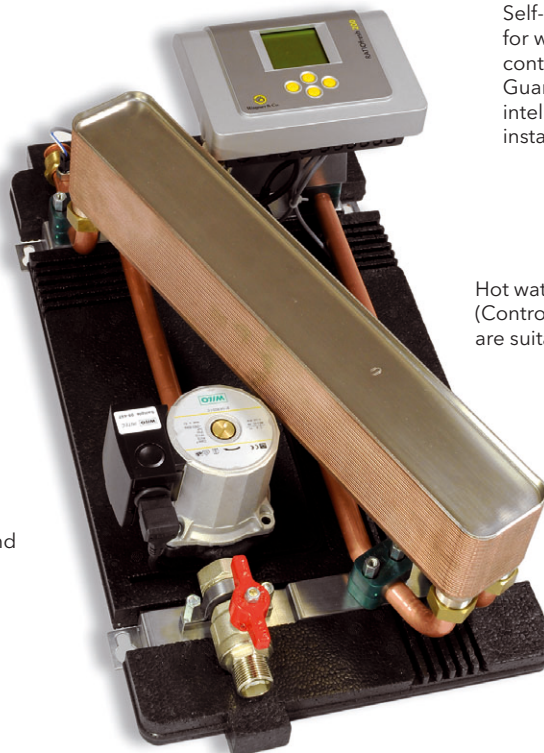
### Outstanding comfort and performance

A plate heat exchanger with a large thermal length and efficient circulation pump as well as years of practical experience in micro-processing guarantee a comfortable hot water supply at an uncompromisingly high output.



Powerful copper soldered stainless steel plate heat exchanger.  
Max. solar yield through low return temperature in the buffer storage circuit.

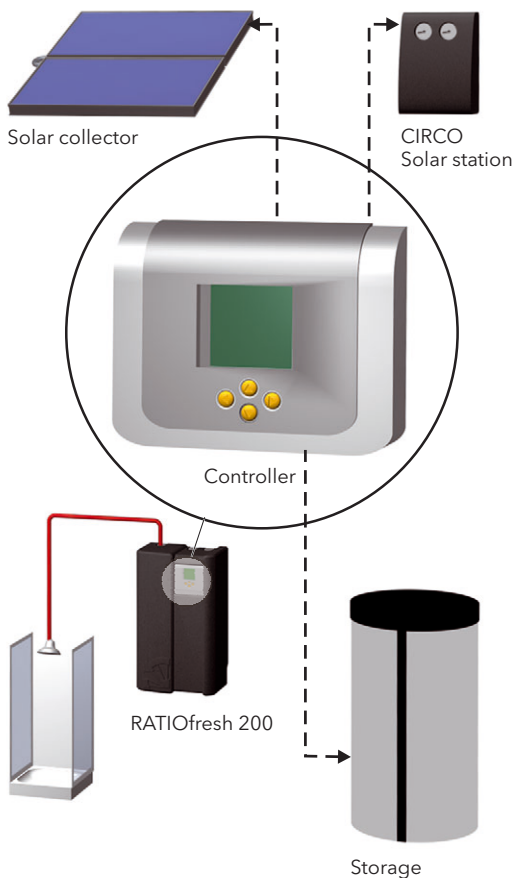
Demand driven and energy saving unloading pump.



Self-learning multi functional controller for water heating and solar system controlling.  
Guaranteed optimal tapping and intelligent control of the complete solar installation.

Hot water circulation possible (Controller and hydraulic layout are suitably prepared).

Practical positioning of the connections for an easy and fast assembly.



RATIOfresh 200 controller and freshwater heater

## One Controller for Everything

On the one hand, the controller of the freshwater unit assures constant hot water availability and also controls the hot water circulation, if so desired. On the other hand, the unit is also a high quality solar controller which can control even complex systems with its 5 integrated system variants.

### Benefits:

- Simplification of the system operation
- Cutting the system costs
- Reduced installation effort

To save space, the freshwater unit and the solar station CIRCO can be installed directly to the buffer storage.

## Technical Data in Detail

### RATIOfresh 200

#### Tapping output, l/min

- 10 °C → 45 °C (secondary), 55 °C (primary) 20
- 10 °C → 60 °C (secondary) with added cold water 27
- 45 °C, 70 °C (primary)

#### Performance number according to DIN 4708 T3, NL

- 10 °C → 45 °C (secondary), 55 °C (primary) 2
- 10 °C → 60 °C (secondary) with added cold water 4
- 45 °C, 82 °C (primary)

Water temperature setting range 25 - 70 °C

Pressure drop sec. side, mbar < 470 (20 l/min)

Power requirements 230 V / 50 Hz

Max. permitted pressure primary 6 bar, secondary 10 bar

Max. permitted temperature primary 95 °C, secondary 70 °C

Power rating 63 W

Max. electrical power input (to regard when additional pumps, valves etc. are used) 920 W

Connections G ¾", flat sealing

Dimensions (WxHxD) 350 x 590 x 230 mm

Weight 12 kg

Wagner & Co  
Solartechnik GmbH  
Zimmermannstraße 12  
D-35091 Cölbe/Marburg  
Tel. +49 (0) 64 21 80 07-0  
Fax +49 (0) 64 21 80 07-596

info@wagner-solar.com  
www.wagner-solar.com

