

Greenfield Mounting System TRIC flex four



Wagner Solar

ENERGIETECHNIK
ENERGY TECHNOLOGY
TECHNOLOGIE ÉNERGÉTIQUE
ENERGIETECHNIEK



System costs down, revenues up with TRIC flex four - the premium grade aluminum and stainless steel greenfield mounting system reduces your project costs on many levels: material, transportation and labor time. It is exceptionally versatile - also on difficult terrain.



STANDOUTS

- **High grade materials**
- **Fast and simple setup**
- **Low transportation costs**
- **Flexible adjustment**
- **Economic system costs**

DETAILS

Thanks to salt-water proof aluminum and stainless steel connection components, TRIC flex is extraordinarily corrosion resistant..

In comparison to common systems, TRIC flex four allows you to save up to 50% installation time, saving considerable labor costs - in part due to our patented module fastener TRIC clip.

In particular for international projects, transportation costs are a decisive factor. Transporting the material and weight optimized aluminum system is roughly 30% cheaper than a comparable steel system.

Whether as South or East-West variant: with its module angle between 0 and 45° and terrain slopes up to 20° TRIC flex four is the perfect system even for difficult terrains..

TRIC flex four is the mounting systems of choice for economic greenfield projects - not only because its affordable, but also because it reduces planning, transportation, installation and follow up maintenance costs.

Greenfield Mounting System TRIC flex four



South Variant

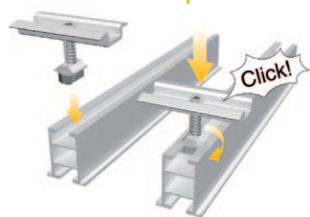
Mounting angle
adjustable from 0 to 45°

4 modules horizontally one above the other,
12 module side by side per table

Material: aluminum,
stainless steel

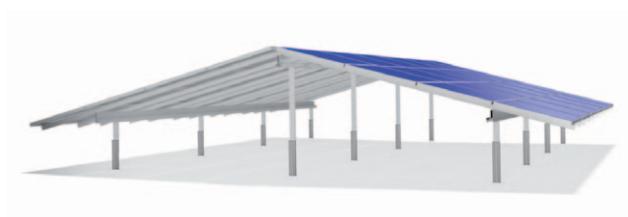
Terrain sloping up to 20°
in all directions possible

Grounding options: sigma profile,
steel roots, concrete foundations



Module fixing with patented TRIC clip
module fastener

East-west-variant



Technical data	Greenfield mounting system TRIC flex four
Application	Greenfield mounting system for framed PV modules
Module format	Horizontal, up to 4 x 12 modules per table, clamping or inlay system
Orientation	South and East-West variants
Mounting angle	Stepless adjustment from 0° to 45°
Terrain slope	Up to 20°, all directions (along or across)
Material	Aluminum and stainless steel
Product warranty	10 years