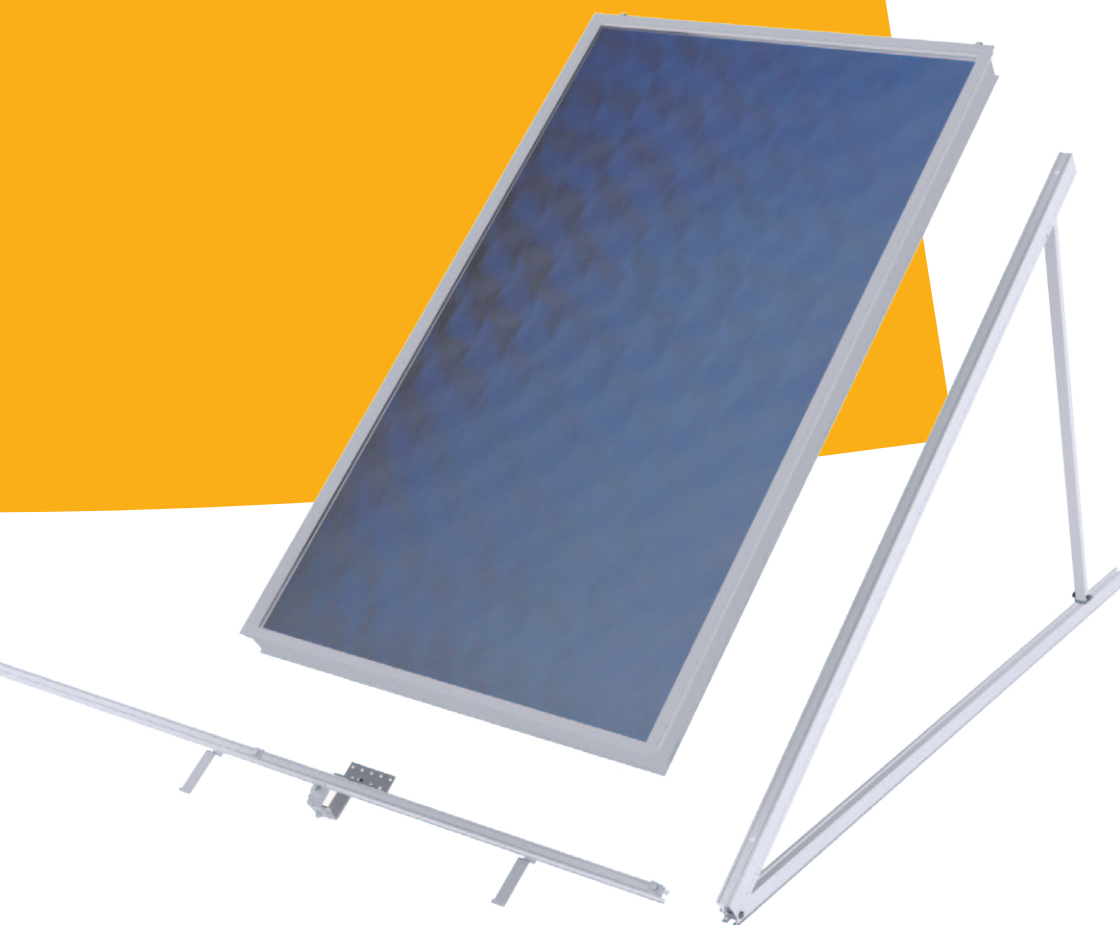


Racking System EURO TRIC



Wagner Solar

ENERGIETECHNIK
ENERGY TECHNOLOGY
TECHNOLOGIE ÉNERGÉTIQUE
ENERGIETECHNIEK



Fast, safe and versatile: EURO TRIC is the ideal mounting system for collector on roof and free standing installation.

ADVANTAGES

- **Preassembled components**
- **Simple TOP racking**
- **Versatile for almost any surface**
- **30 years experience and innovation**

DETAILS

Pre-assembled components ensure simple, fast and safe installation. The roof brackets come fitted with the clamps for the collector rail and collectors. The mounting triangles for free-standing placement are completely preassembled and delivered folded.

The main steps in racking the collectors are carried out from above – brilliantly simple and secure.

Brackets for on-roof installation are available for all conventional roof types. Free-standing vertical and horizontal placement is possible on almost all levels and sloping surfaces.

As solar pioneers, we have produced systems for solar hot water preparation and space heating support for 40 years. Benefit from our experience and innovation!

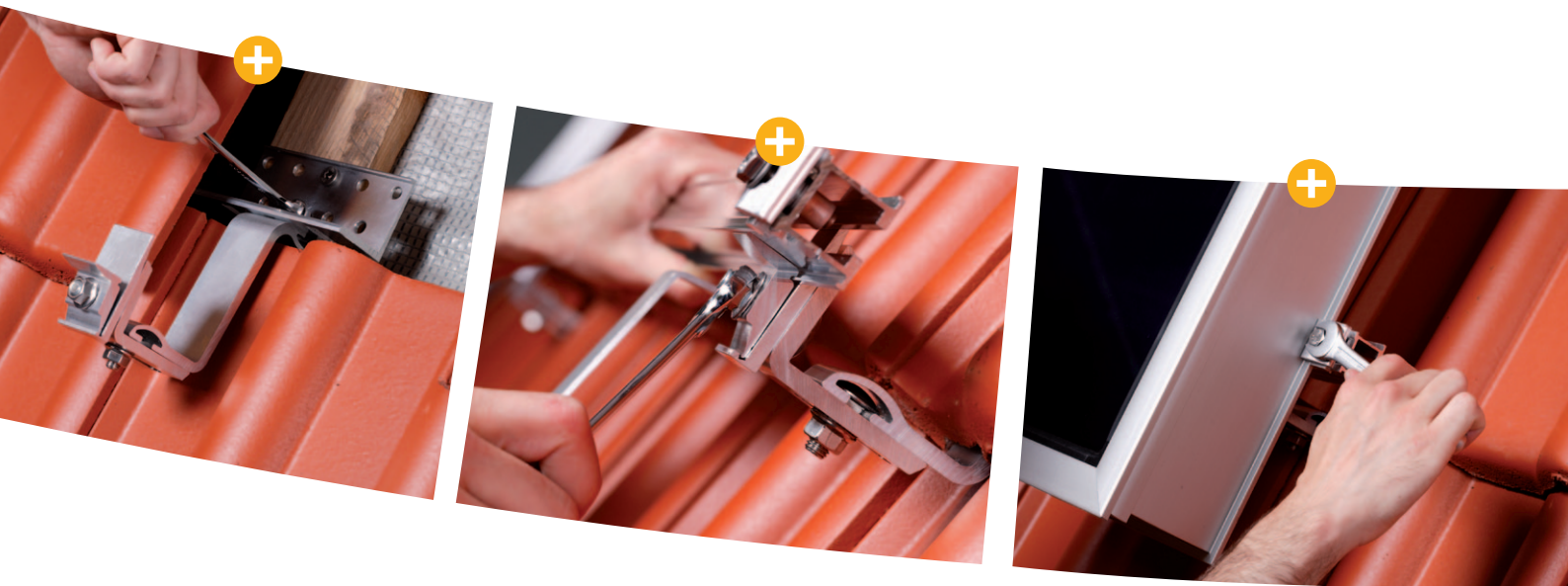
On-roof installation **EURO TRIC A**

- + The right hold on all roof types**

A broad range of roof brackets enables attachment of collectors to almost any roof type. Installations on roofings with plain tile, corrugated iron and troughed sheeting are possible without any problems.
- + Simple TOP installation**

All fastening elements for the collector installation are easily accessible from above. This simply brilliant TOP fitting concept saves you precious time.
- + Economical and safe**

Coherent designs and smart detail solutions simplify and speed up installation. Safety is key. If required, we also carry out a project-related structural configuration..



Free-standing installation EURO TRIC F

Preassembled mounting triangles

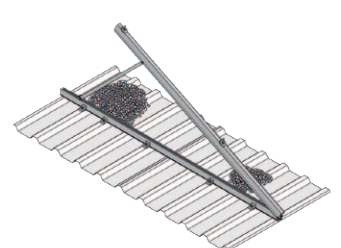
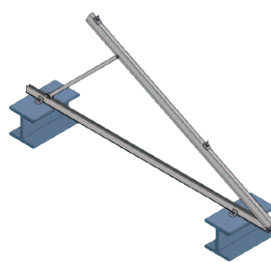
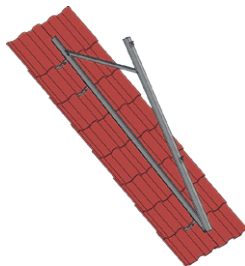
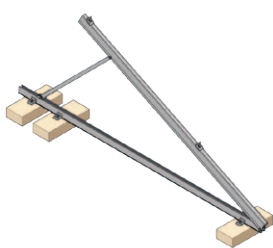
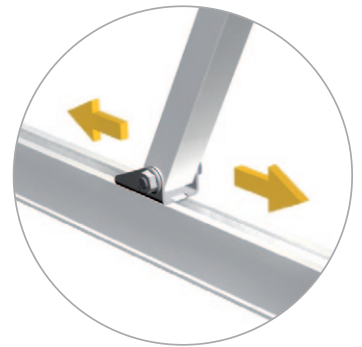
The mounting triangles consist of highly stressable aluminum profiles and are completely preassembled. They are delivered folded down, saving space and costs and facilitating transportation. On location they are simply opened up to the desired angle of inclination and bolted.

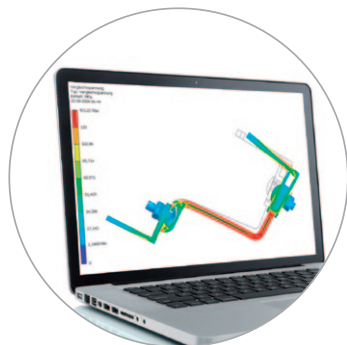
Steplessly adjustable angle of inclination

The EURO TRIC F system enables the vertical and horizontal setup of free-standing EURO collectors. In the 35° - 50° range, the angle can be set quickly and steplessly.

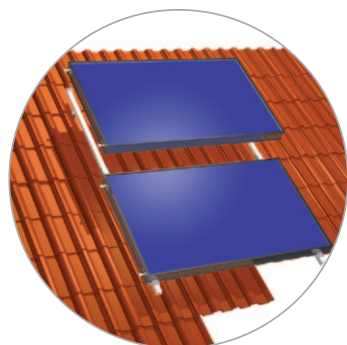
Mountable on almost any surface

EURO TRIC F can be mounted on all common flat or sloping roof types. Whether steel beam constructions, metal roofing, roofs with tiles or fixing to concrete blocks, a safe and time-saving installation is always possible.

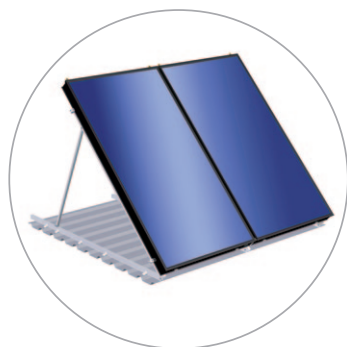




The continuously optimized EURO TRIC racking systems are CE certified.



EURO TRIC A - Aluminum racking rails with completely preassembled fastening clips.



EURO TRIC F - Preassembled foldable mounting triangles for flexible inclination setting.

APPLICATION

- EURO TRIC A - with a broad range of roof brackets, for example the triple-adjustable aluminum bracket Hv TOP.
- EURO TRIC F - Free-standing setup on almost all surfaces: Tiles, steel beam, concrete, troughed sheeting with gravel load. Angles from 35°- 50° steplessly adjustable.
- Collector placement horizontally above each other or vertically side by side.

EQUIPMENT

- Corrosion-resistant aluminum and stainless steel screws.
- Installation kit including collector connections.

INSTALLATION

- Secure installation by norm-conforming, certified design.
- TOP racking - i.e. the three major steps of collector fitting are carried out from above.
- Preassembled components for simple, fast racking.